



ENDSLEIGH COURT

BLOOMSBURY, WC1H



ASKING PRICE
£395,000





ENDSLEIGH COURT

BLOOMSBURY

LONDON, WC1H

- **Studio Apartment**
- **Separate Kitchen**
- **7th Floor**
- **Concierge**
- **Lift access**
- **Heart Of Bloomsbury**
- **Parking Available To Let**

An immaculately presented seventh-floor studio apartment set within the sought-after Endsleigh Court.

Residents of this well-maintained development benefit from a 24-hour concierge, recently refurbished communal areas, and modern lift access.

The apartment offers a well-designed layout, featuring a fully fitted kitchen, separate contemporary bathroom, a spacious reception/sleeping area, and excellent built-in storage.

Ideally located on Upper Woburn Place, the property is just a short walk from the British Museum, as well as the vibrant amenities of Tottenham Court Road and Russell Square. This prime central location is particularly appealing to UCL students and professionals working at UCLH.

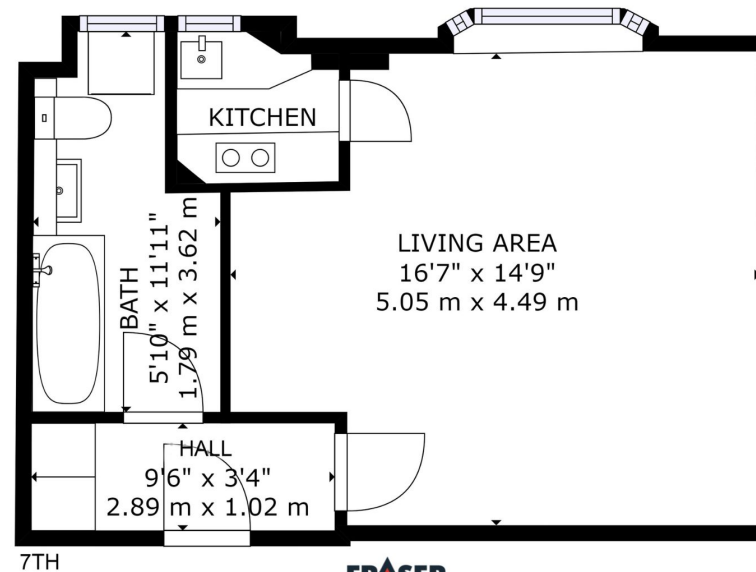
Parking is available to rent for £10 per day with weekends free.

The property is exceptionally well connected, with Euston Square, King's Cross St Pancras, and St Pancras International all within easy reach, providing access to multiple Underground lines, National Rail services, and Eurostar connections.

ENDSLEIGH COURT BLOOMSBURY LONDON, WC1H

Approximate gross
internal area:
32.1 SQM /
346 SQ FT

Upper Woburn Place



7TH

FRASER
& Co

GROSS INTERNAL AREA
TOTAL: 346 sq ft, 32 sq m
SIZES AND DIMENSIONS ARE APPROXIMATE, ACTUAL MAY VARY.

POWERED BY
matterport

Tenure: Leasehold, 146 years

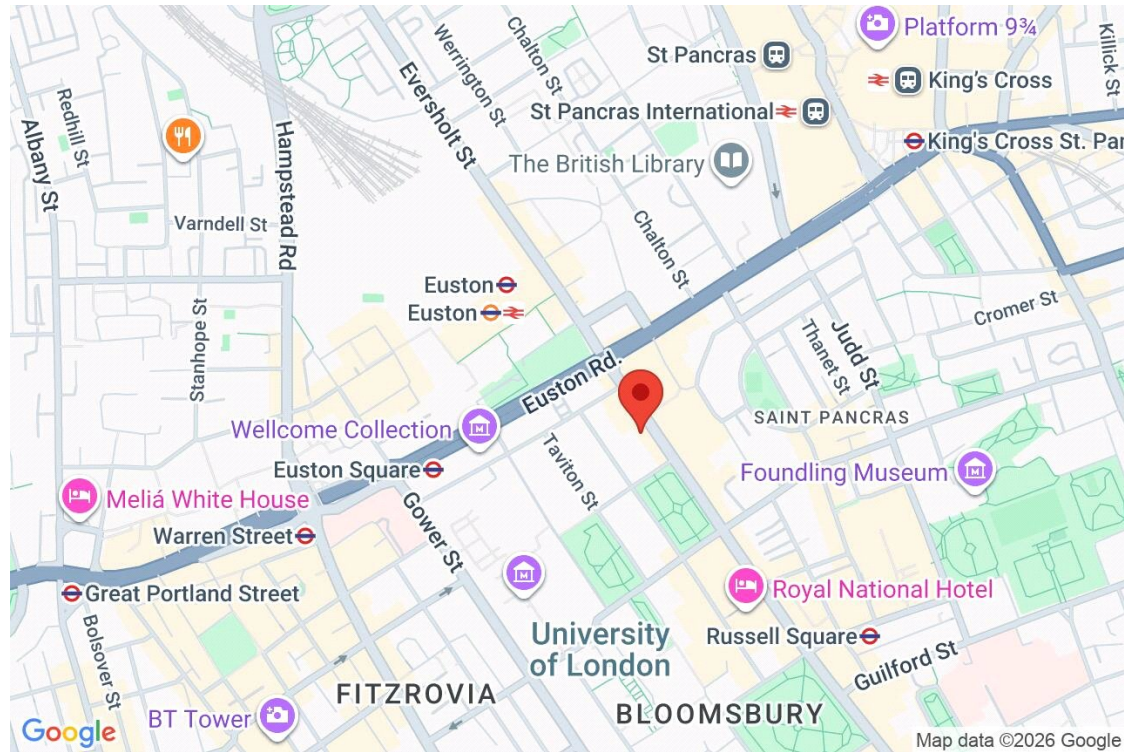
Estimated ground rent: £0 p.a.

Estimated service charge: £6000 p.a.

info@fraser.uk.com
www.fraser.uk.com

London West End Sales Office
12 West End Quay
1 South Wharf Road, London, W2 1JB
Tel: 020 7723 5645

FRASER
& Co



Score	Energy rating	Current	Potential
92+	A		
81-91	B		
69-80	C	73 C	81 B
55-68	D		
39-54	E		
21-38	F		
1-20	G		

info@fraser.uk.com
www.fraser.uk.com

London West End Sales Office
12 West End Quay
1 South Wharf Road, London, W2 1JB
Tel: 020 7723 5645

