
Baldwin House, 16,2 Gayton Road, Harrow, London, HA1 2XE

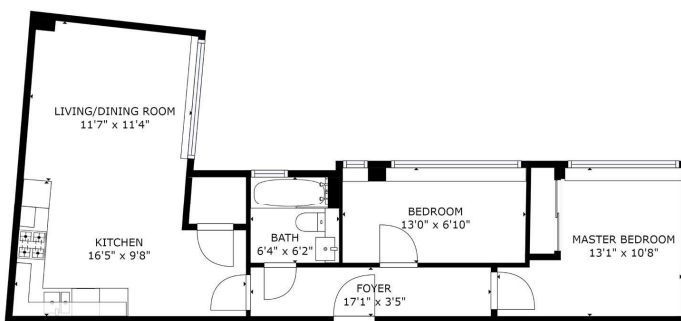


- Furnished
- South-East Facing
- High-Specification Design Throughout
- Lifts
- Fully Fitted Kitchen
- Modern Building
- Secure Entry

A modern apartment on the 1st floor (with lift) of a development in Harrow on the Hill.

This South-East facing apartment has a generous sized lounge with an open plan fully fitted kitchen, 2 double bedrooms and a bespoke bathroom.

Council Tax Band:



GROSS INTERNAL AREA 602 sq ft
 TOTAL 609 sq ft
 SIZES AND DIMENSIONS ARE APPROXIMATE. ACTUAL MAY VARY.

POWERED BY matterport

Disclaimer

Every attempt has been made to ensure accuracy, however these property particulars are approximate and for illustrative purposes only. They have been prepared in good faith and they are not intended to constitute part of an offer of contract. We have not carried out a structural survey and the services, appliances and specific fittings have not been tested. All photographs, measurements, floor plans and distances referred to are given as a guide only and should not be relied upon for the purchase of any fixture or fittings. Lease details, service charges and ground rent (where applicable) are given as a guide only and should be checked prior to agreeing a sale.

Quest Estates Limited T/A Fraser & Company
 Registered No. 3051498 Unit 12 Westcliffe Apartments 1 South Wharf Road

Energy Efficiency Rating		Current	Potential
Very energy efficient - lower running costs			
(92+)	A		
(81-91)	B		
(69-80)	C	76	77
(56-68)	D		
(39-54)	E		
(21-38)	F		
(1-20)	G		
Not energy efficient - higher running costs			
England, Scotland & Wales		EU Directive 2002/91/EC	